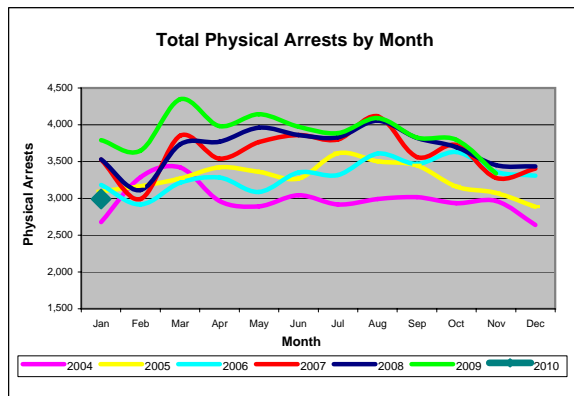
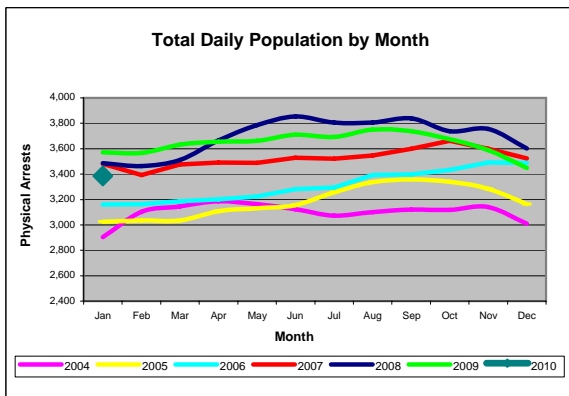


AVERAGE DAILY POPULATION REPORT Davidson County Correctional Facilities

Overview of January 2010	
1.	The ADP for January 2010 decreased 1.8% below December 2009 (from 3,447 to 3,385). The January 2010 ADP is 5.2% lower than January 2009.
2.	In January 2010 the ADP for Locally Sentenced Felons (LSF) declined 3.3% below December 2009's ADP, and also dropped 3% below January 2009 levels.
3.	The ADP for the Department of Homeland Security / Immigration and Customs Enforcement (DHS/ICE) detainees declined 5.9% in January 2010 compared to December 2009. The ADP was 16 in January 2010, which is 63.6% below the ADP for January 2009 (44 detainees).
4.	Of the average 16 DHS/ICE inmates in the January 2010 ADP, 2 were ICE Detainers and 14 were DHS/ICE Custody Holds. On average, ICE Detainers stayed 1.5 days and DHS/ICE Custody Holds stayed 3.4 days upon release in January 2010. Overall, ICE inmates stayed 3.6 days which was 10% shorter than in December 2009.
5.	LSF inmates comprised 32.2% of the ADP, while Pretrial Felons (PTF) made up 29.3% of the total ADP for January 2010.
6.	The ADP for Pretrial Felons grew 0.7% in January 2010 above December 2009, but dropped 11.8% below January 2009.
7.	The ADP for Pretrial Misdemeanants declined 7.4% in January 2010 compared to December 2009, and dropped 17% below January 2009.
8.	In January 2010 the ADP for Convicted Misdemeanants & DUIs (CM+DUI) decreased 3.5% below December 2009 levels, but grew 1.8% above January 2009.
9.	The average daily male population dropped to 2,991 (-1.6%) in January 2010, while the female daily population was 394, which was a 3.2% drop below December 2009.
10.	All of the Davidson County correctional facilities were below certified capacity during January 2010. The Metro Detention Facility (CCA) was close to capacity, operating at 99.2% in January 2010.
11.	On average, the DCSO facilities (excluding MDF) operated at 78.9% of certified capacity in January 2010.
12.	There were 2,990 physical arrests made in January 2010. This was 21% fewer than in January 2009. Data for December 2009 will be added when it becomes available.



Disclaimer: All reports and other documents generated by Criminal Justice Planning are based on information drawn from databases owned and maintained by other agencies of state and local government. Therefore, Criminal Justice Planning can not guarantee, or assume responsibility for, the accuracy or completeness of the data or information reflected in any reports or other documents.

Average Daily Population Summary by Classification

Month 2010	Total ADP			Total ADP by Gender					
	Total	Monthly Change	Change Since Jan	Male	Monthly Change	Change Since Jan	Female	Monthly Change	Change Since Jan
Jan	3,385	-1.8%		2,991	-1.6%		394	-3.2%	
Feb									
Mar									
Apr									
May									
Jun									
Jul									
Aug									
Sep									
Oct									
Nov									
Dec									
AVG	3,385	-1.8%		2,991	-1.6%		394	-3.2%	

Month 2010	PTF	Monthly Change	Change Since Jan	PTM	Monthly Change	Change Since Jan	CM+DUI	Monthly Change	Change Since Jan
Jan	991	0.7%		125	-7.4%		691	-3.5%	
Feb									
Mar									
Apr									
May									
Jun									
Jul									
Aug									
Sep									
Oct									
Nov									
Dec									
AVG	991	0.7%		125	-7.4%		691	-3.5%	

ADP	Average Daily Population
PTF	Pretrial Felons
PTM	Pretrial Misdemeanants
CM+DUI	Convicted Misdemeanants including DUI's

Notes:

*Classification and gender subtotals may not sum to the monthly total due to rounding.

Source: "Average Daily Population of Detention Facilities", Davidson County Sheriff's Office.

Average Daily Population Summary by Classification

Month 2010	LSF	Monthly Change	Change Since Jan	PVF	Monthly Change	Change Since Jan
Jan	1,091	-3.3%		204	0.0%	
Feb						
Mar						
Apr						
May						
Jun						
Jul						
Aug						
Sep						
Oct						
Nov						
Dec						
AVG	1,091	-3.3%		204	0.0%	

Month 2010	PVM	Monthly Change	Change Since Jan	OTHER (a)	Monthly Change	Change Since Jan	DHS/ICE** (b)	Monthly Change	Change Since Jan
Jan	29	31.8%		238	-1.2%		16	-5.9%	
Feb									
Mar									
Apr									
May									
Jun									
Jul									
Aug									
Sep									
Oct									
Nov									
Dec									
AVG	29	31.8%		238	-1.2%		16	-5.9%	

****A MORE DETAILED BREAKDOWN OF DHS/ICE INMATES IS ON PAGE 9 OF THIS REPORT**

LSF	Locally Sentenced Felons
PVF	Probation Violators, Felony
PVM	Probation Violators, Misdemeanor
OTHER	All other classifications
DHS/ICE	Detained for U.S. Department of Homeland Security/Immigration and Customs Enforcement

Notes:

*Classification and gender subtotals may not sum to the monthly total due to rounding.

(a) Other classifications include the following charge classes: CIVCON, SPARVIO, STATESPL, STATE, FED (with no active immigration charge), GOVERNOR, NONE, NULL (with no active charges, ICE Detainer or Custody Holds).

(b) The Sheriff's office began screening for legal immigration status in mid-April 2007. The number in the table represents: (1) inmates who have no active local charges and are being held on a 48-hour ICE Detainer, (2) inmates who have no active local charges and are being held on a DHS/ICE Custody Hold, and (3) inmates who have only an active immigration charge.

Source: "Average Daily Population of Detention Facilities", Davidson County Sheriff's Office.

**Percent of Population by Classification
Including LSF Inmates**

THESE TABLES **INCLUDE** LOCALLY SENTENCED FELONS

Month 2010	ADP	PTF	PTM	CM/DUI	LSF	PVF	PVM	OTHER (a)	DHS/ICE (b)
Jan	3,385	29.3%	3.7%	20.4%	32.2%	6.0%	0.9%	7.0%	0.5%
Feb									
Mar									
Apr									
May									
Jun									
Jul									
Aug									
Sep									
Oct									
Nov									
Dec									
AVG	3,385	29.3%	3.7%	20.4%	32.2%	6.0%	0.9%	7.0%	0.5%

Month 2010	ADP	Percent Change	
		Monthly	Since Jan
Jan	3,385	0.0%	
Feb			
Mar			
Apr			
May			
Jun			
Jul			
Aug			
Sep			
Oct			
Nov			
Dec			

Notes:

(a) Other classifications include the following charge classes: CIVCON, SPARVIO, STATESPL, STATE, FED (with no active immigration charge), GOVERNOR, NONE, NULL (with no active charges, ICE Detainer or Custody Holds).

(b) The Sheriff's office began screening for legal immigration status in mid-April 2007. The number in the table represents: (1) inmates who have no active local charges and are being held on a 48-hour ICE Detainer, (2) inmates who have no active local charges and are being held on a DHS/ICE Custody Hold, and (3) inmates who have only an active immigration charge.

Source: "Average Daily Population of Detention Facilities", Davidson County Sheriff's Office.

Percent of Population by Classification Excluding LSF Inmates

THESE TABLES **EXCLUDE** LOCALLY SENTENCED FELONS

Month 2010	ADP	PTF	PTM	CM/DUI	PVF	PVM	OTHER (a)	DHS/ICE (b)
Jan	2,294	43.2%	5.4%	30.1%	8.9%	1.3%	10.4%	0.7%
Feb								
Mar								
Apr								
May								
Jun								
Jul								
Aug								
Sep								
Oct								
Nov								
Dec								
AVG	2,294	43.2%	5.4%	30.1%	8.9%	1.3%	10.4%	0.7%

Month 2010	ADP	Percent Change	
		Monthly	Since Jan
Jan	2,294	3.7%	
Feb			
Mar			
Apr			
May			
Jun			
Jul			
Aug			
Sep			
Oct			
Nov			
Dec			

Notes:

(a) Other classifications include the following charge classes: CIVCON, SPARVIO, STATESPL, STATE, FED (with no active immigration charge), GOVERNOR, NONE, NULL (with no active charges, ICE Detainer or Custody Holds).

(b) The Sheriff's office began screening for legal immigration status in mid-April 2007. The number in the table represents: (1) inmates who have no active local charges and are being held on a 48-hour ICE Detainer, (2) inmates who have no active local charges and are being held on a DHS/ICE Custody Hold, and (3) inmates who have only an active immigration charge.

Source: "Average Daily Population of Detention Facilities", Davidson County Sheriff's Office.

Percent Change in the Average Daily Population from Previous Year to Current Year

Month	ADP			PTF			PTM		
	2009	2010	% Change	2009	2010	% Change	2009	2010	% Change
Jan	3,572	3,385	-5.2%	1,124	991	-11.8%	151	125	-17.2%
Feb	3,566			1,055			148		
Mar	3,631			1,050			149		
Apr	3,654			1,028			156		
May	3,663			1,033			167		
Jun	3,709			1,036			168		
Jul	3,692			1,034			168		
Aug	3,751			1,076			148		
Sep	3,737			1,047			147		
Oct	3,676			1,002			146		
Nov	3,589			1,025			146		
Dec	3,447			984			135		
Avg	3,641	3,385	-5.2%	1,041	991	-11.8%	152	125	-17.2%

Month	CM+DUI			LSF			PVF		
	2009	2010	% Change	2009	2010	% Change	2009	2010	% Change
Jan	679	691	1.8%	1,128	1,091	-3.3%	233	204	-12.4%
Feb	723			1,135			251		
Mar	775			1,142			256		
Apr	773			1,173			271		
May	764			1,186			253		
Jun	816			1,201			246		
Jul	831			1,153			271		
Aug	861			1,116			300		
Sep	845			1,167			263		
Oct	821			1,166			259		
Nov	767			1,130			243		
Dec	716			1,128			204		
Avg	781	691	1.8%	1,152	1,091	-3.3%	254	204	-12.4%

Month	PVM			Other (a)			DHS/ICE (b)		
	2009	2010	% Change	2009	2010	% Change	2009	2010	% Change
Jan	38	29	-23.7%	175	238	36.0%	44	16	-63.6%
Feb	29			189			36		
Mar	34			194			29		
Apr	32			195			27		
May	41			191			29		
Jun	37			185			20		
Jul	26			192			17		
Aug	25			207			18		
Sep	33			221			14		
Oct	36			228			18		
Nov	31			230			17		
Dec	22			241			17		
Avg	32	29	-23.7%	204	238	36.0%	24	16	-63.6%

ADP	Average Daily Population
PTF	Pretrial Felons
PTM	Pretrial Misdemeanants
CM+DUI	Convicted Misdemeanants including DUI's
LSF	Locally Sentenced Felons
PVF	Probation Violators, Felony
PVM	Probation Violators, Misdemeanor
OTHER	All other classifications
DHS/ICE	Detained for U.S. Department of Homeland Security/Immigration and Customs Enforcement

Notes:

- (a) Other classifications include the following charge classes: CIVCON, SPARVIO, STATESPL, STATE, FED (with no active immigration charge), GOVERNOR, NONE, NULL (with no active charges, ICE Detainer or Custody Holds).
- (b) The Sheriff's office began screening for legal immigration status in mid-April 2007. The number in the table represents: (1) inmates who have no active local charges and are being held on a 48-hour ICE Detainer, (2) inmates who have no active local charges and are being held on a DHS/ICE Custody Hold, and (3) inmates who have only an active immigration charge.

Source: "Average Daily Population of Detention Facilities", Davidson County Sheriff's Office.

Adult Physical Arrests

MONTH	2009	2010	% Change		
			Previous Month to Current Month	2009 Month to 2010 Month	Since January 2010
Jan	3,792	2,990		-21.1%	
Feb	3,649				
Mar	4,350				
Apr	3,981				
May	4,145				
Jun	3,972				
Jul	3,888				
Aug	4,092				
Sep	3,826				
Oct	3,794				
Nov	3,338				
Dec **					
YTD Total	42,827	2,990	Avg:	Avg: -21.1%	

MONTH	2009 YTD TOTAL	2010 YTD TOTAL	2009 YTD to 2010 YTD % Change
Jan	3,792	2,990	-21.1%
Feb	7,441		
Mar	11,791		
Apr	15,772		
May	19,917		
Jun	23,889		
Jul	27,777		
Aug	31,869		
Sep	35,695		
Oct	39,489		
Nov	42,827		
Dec**			

Source: Metropolitan Police Department of Nashville and Davidson County

**Due to implementation of the MNPD ARMS system beginning in December 2009, arrest information for December 2009 is unavailable as of the report date. Data will be added to this report when it becomes available.

Note: This report includes the number of physical arrests made in Davidson County during the time period above. A physical arrest is a custodial arrest and represents an individual body and not the number of charges issued to a person. The figures above include adult arrestees only.

AVERAGE DAILY POPULATION AND LENGTH OF STAY FOR DHS/ICE INMATES (a)

Month 2010	AVERAGE DAILY POPULATION			MONTHLY CHANGE			CHANGE SINCE JANUARY		
	DHS/ICE DETAINERS (b)	DHS/ICE CUSTODY (c)	TOTAL ALL ICE INMATES	DHS/ICE DETAINERS (b)	DHS/ICE CUSTODY (c)	TOTAL ALL ICE INMATES	DHS/ICE DETAINERS (b)	DHS/ICE CUSTODY (c)	TOTAL ALL ICE INMATES
Jan	2	14	16	-52.0%	9.8%	-5.4%			
Feb									
Mar									
Apr									
May									
Jun									
Jul									
Aug									
Sep									
Oct									
Nov									
Dec									
AVG	2	14	16	-52.0%	9.8%	-5.4%	0.0%	0.0%	0.0%

Month 2010	AVERAGE LENGTH OF STAY (DAYS) (d)			MONTHLY CHANGE			CHANGE SINCE JANUARY		
	DHS/ICE DETAINERS (b)	DHS/ICE CUSTODY (c)	TOTAL ALL ICE INMATES	DHS/ICE DETAINERS (b)	DHS/ICE CUSTODY (c)	TOTAL ALL ICE INMATES	DHS/ICE DETAINERS (b)	DHS/ICE CUSTODY (c)	TOTAL ALL ICE INMATES
Jan	1.5	3.4	3.6	-26.3%	-2.6%	-10.2%			
Feb									
Mar									
Apr									
May									
Jun									
Jul									
Aug									
Sep									
Oct									
Nov									
Dec									
AVG	1.5	3.4	3.6	-26.3%	-2.6%	-10.2%	0.0%	0.0%	0.0%

Notes:

*Column totals may not sum to Total due to rounding.

(a) In April 2007 the Davidson County Sheriff's Office began the 287 (g) program in conjunction with U.S. Department of Homeland Security/ Immigration and Customs Enforcement (DHS/ICE). This program grants the Sheriff's Office the authority to check the immigration status of all non-U.S. born arrestees.

(b) DHS/ICE Detainers includes inmates who have no active local charges and are being held on a 48-hour detainer for U.S. Department of Homeland Security/Immigration and Customs Enforcement.

(c) DHS/ICE Custody includes inmates who have no active local charges and are being held on a U.S. Department of Homeland Security/Immigration and Customs Enforcement Custody Hold or inmates who have only an active immigration charge.

(d) Average Length of Stay is calculated as of the date released from the Davidson County correctional system. Some inmates spend time both as a DHS/ICE Detainer and then as a DHS/ICE Custody Hold. In these instances the length of stay is reported separately for the two categories, and the total ICE stay length is reported in the "Total All ICE Inmates" column.

Source: Jail Management System, Davidson County Sheriff's Office.